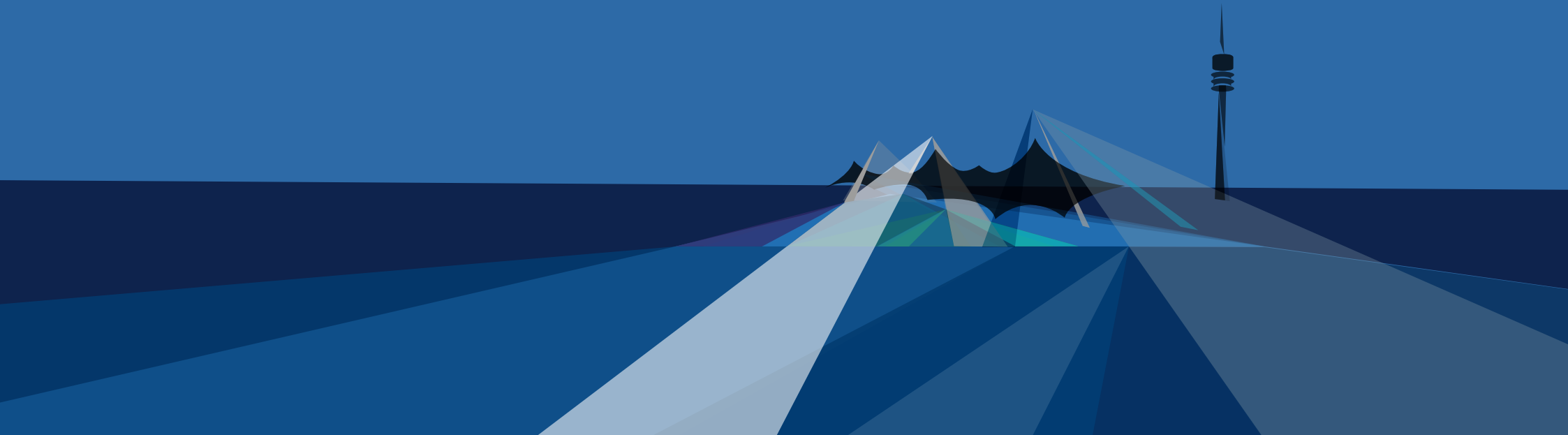


Facts

Small Olympic Hall



Small Olympic Hall

Exterior view





Small Olympic Hall

Interior view



Small Olympic Hall

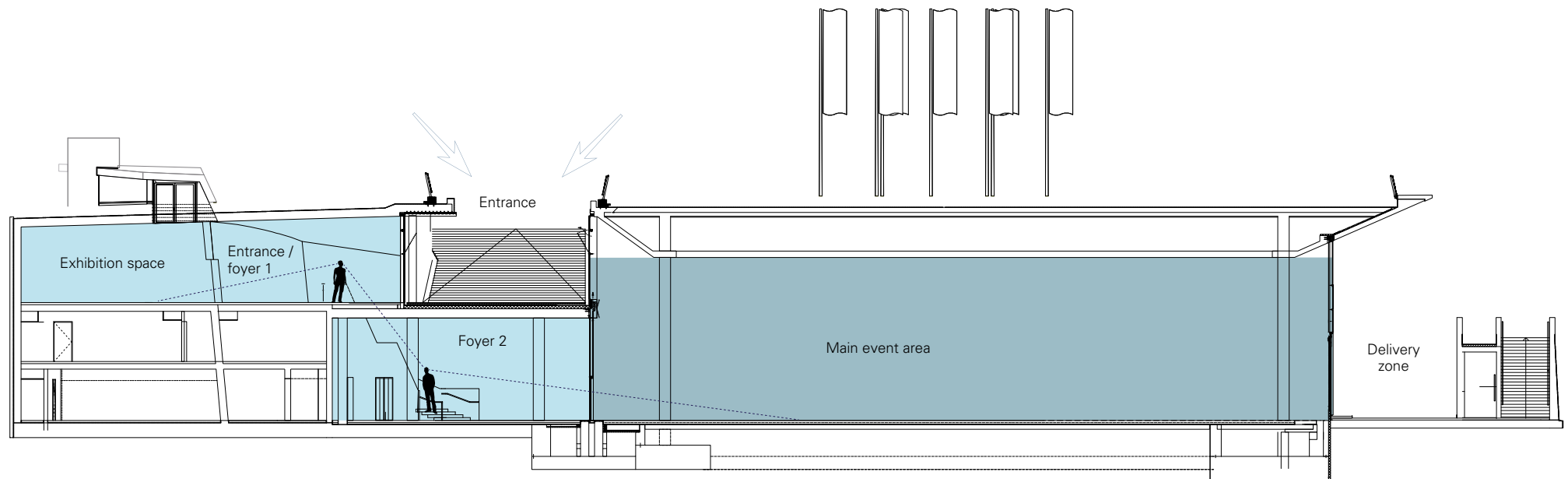
Interior view

Location plan






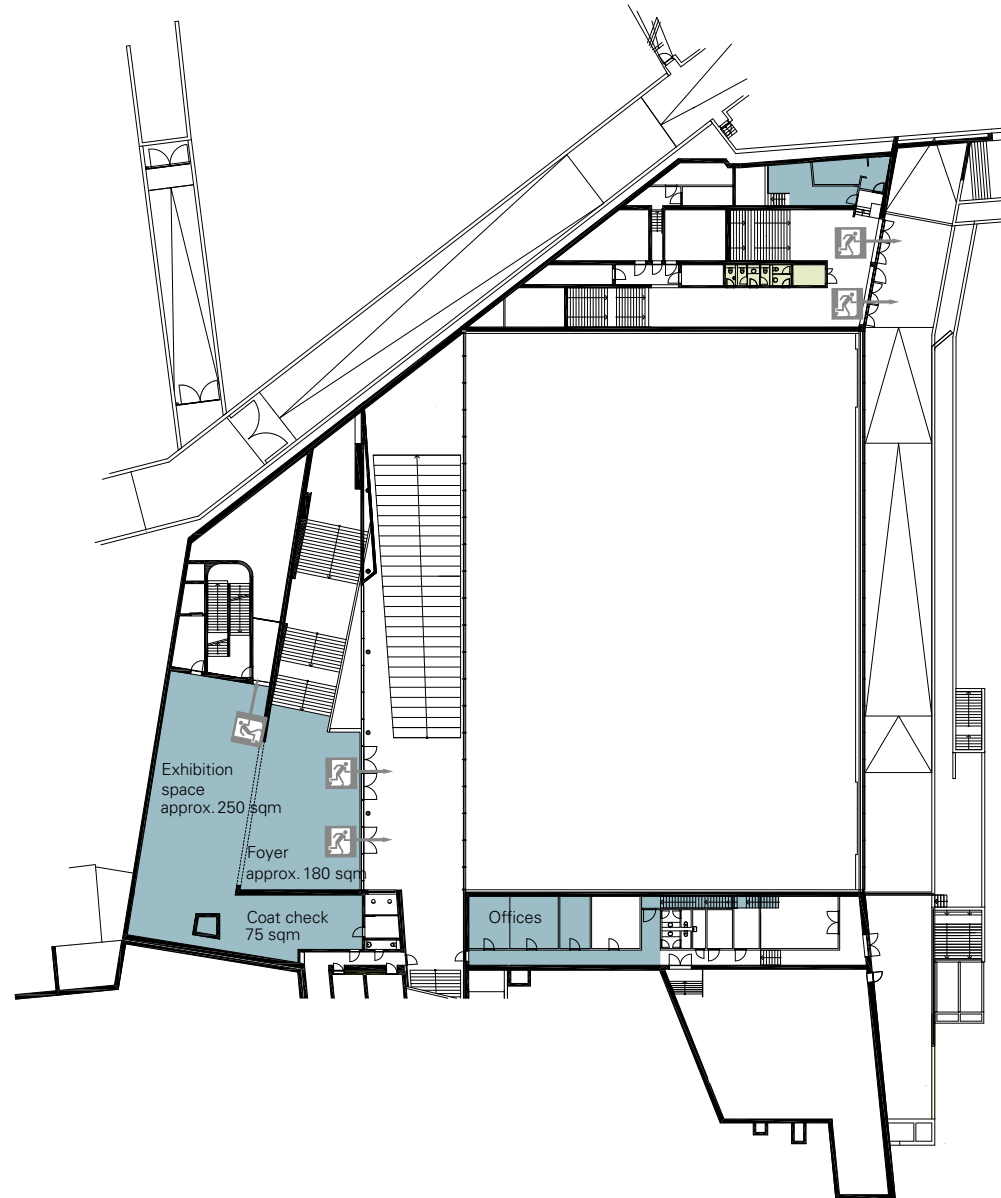
Cross section

- Entrance/foyer
- Main event area



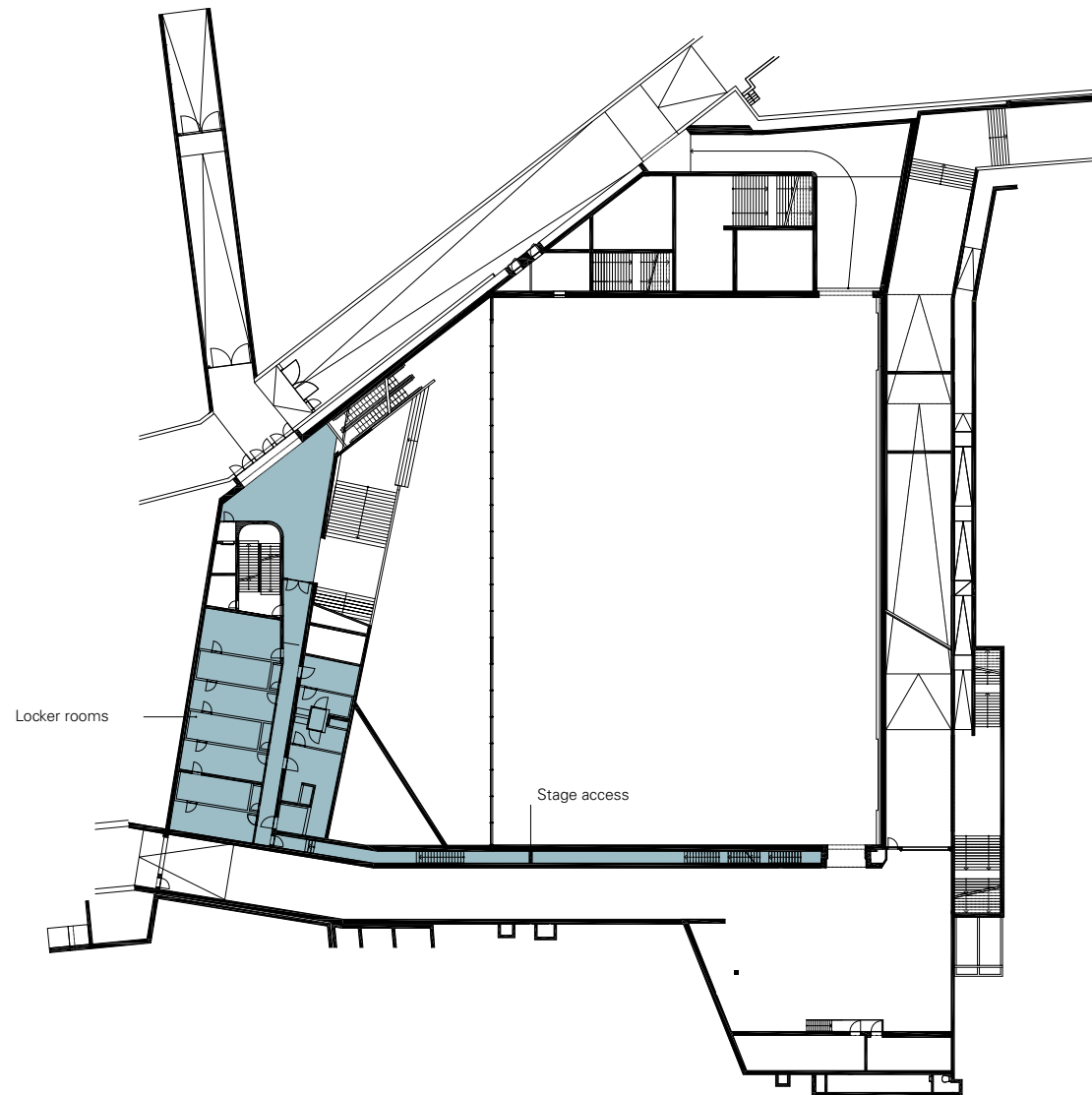
Level 2

-  Rentable space
-  Toilet
-  Emergency exit






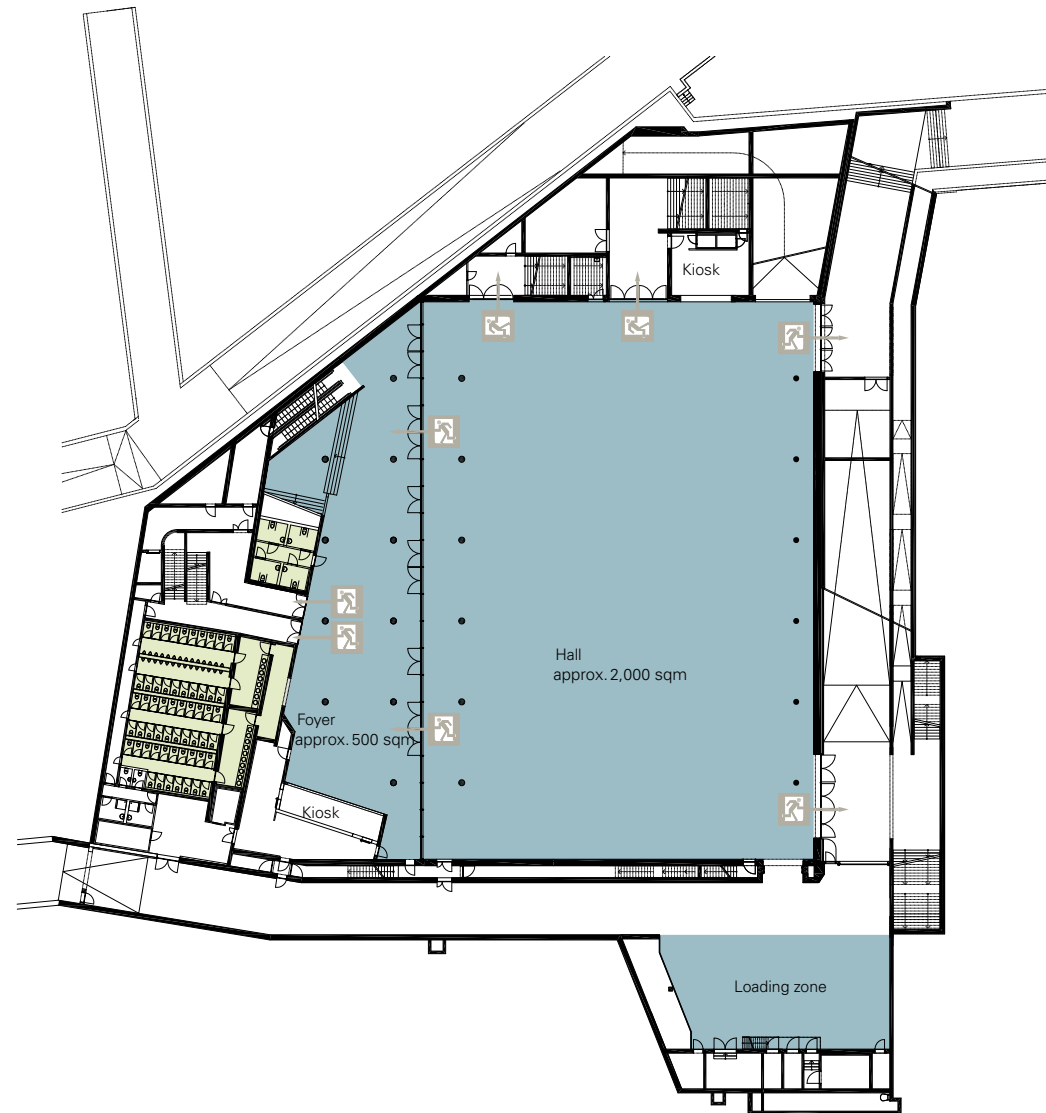
Level 3

■ Rentable space



Level 4

-  Rentable space
-  Toilet
-  Emergency exit



Technical data I

Architect

- > Auer + Weber + Associated

Construction

- > Reinforced concrete construction with glass facade
- > Length approx. 85 m
- > Width approx. 70 m
- > Date of opening fall 2011

Use

- > Multi-functional venue (as multi-purpose hall) with direct connection to the Olympic Hall, to be used among other purposes for pop music concerts, trade fairs, exhibitions, speeches, lectures, presentations, sports etc.

Capacity

- > Maximum capacity: 3,600 persons
- > Total area of approx. 2,000 sqm (55 m x 38 m, height approx. 8.72 m in the vertex)
- > Area of foyer approx. 500 sqm

Technical data II

Facilities

- > Separate access to Foyer area
- > Coat check and toilets
- > 3 offices (15 to 25 sqm)
- > 6 artists' and sports changing rooms (25 to 32 sqm) with shower facilities (approx. 20 sqm)
- > Separate entrance from Spiridon-Louis-Ring

Technical Facilities

- > Ceiling lighting, raster lights, sport lights
- > Floor coating of the hall, solid paved floor
- > Floor ducts
- > Power-lock-pins

Facilities for the Disabled

- > 4 toilets on the lower level, 1 toilet at the artists' dressing rooms
- > Dressing rooms which cater for the needs of people with disabilities
- > Conversion for the needs of athletes in wheelchairs
- > Barrier-free access

Rental price

Price

- > **1 day** **8,500.00 €**
- > **more than 3 event days** **6.800,00 € / day**

Workdays for construction and dismantling will be charged at 50 % of the rental costs.
All price quotes provided are exclusive of value-added sales tax (VAT).

Included in the price of rental

- > Technical personnel on duty during the event
(1 electrical engineering technician, 1 project manager)
- > Office space for organizers

Possible additional costs

- > Water and electricity consumption, telephone usage
- > Electricity and water connection
- > Seating (according to demand)
- > OMG craftsmen (according to demand)
- > Additional parking spaces
- > Permission fee from supervisory authorities
- > Cleaning and waste disposal

b2b.olympiapark.de

Olympiapark München GmbH
Spiridon-Louis-Ring 21
80809 Munich

Phone +49(0)89 3067 2054
event@olympiapark.de